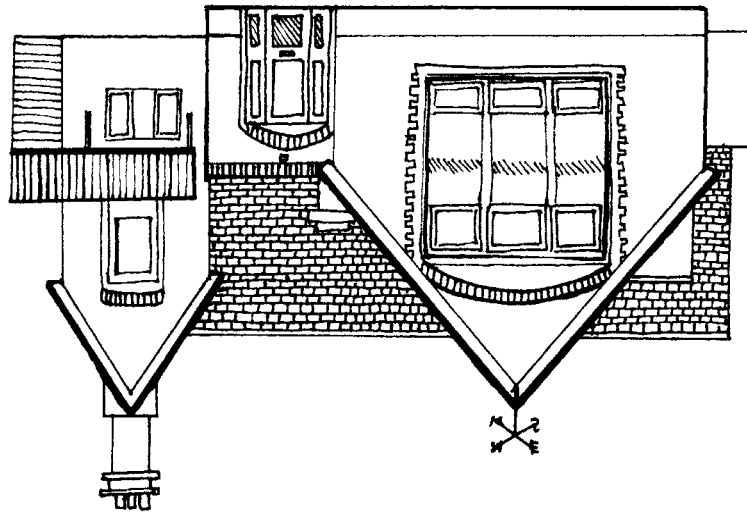


Dry Drayton CE Primary School Asthma Policy



Background

This policy has been written with advice from the Department for Education & Skills, Asthma UK, the local education authority, local healthcare professionals, the school health service, parents/carers, the governing body and pupils.

This school recognises that asthma is a widespread, serious but controllable condition affecting many pupils at the school. The school positively welcomes all pupils with asthma. This school encourages pupils with asthma to achieve their potential in all aspects of school life by having a clear policy that is understood by school staff, their employers (the local education authority) and pupils. Supply teachers and new staff are also made aware of the policy. All staff who come into contact with pupils with asthma are provided with training on asthma from the school nurse who has had asthma training. Training is updated once a year.

Asthma medicines

- Immediate access to reliever medicines is essential. Pupils with asthma are encouraged to carry their reliever inhaler as soon as the parent/carer, doctor or asthma nurse and class teacher agree they are mature enough. The reliever inhalers of younger children are kept in the classroom .
- Parents/carers are asked to ensure that the school is provided with a labelled spare reliever inhaler. These will be stored in the school office in case the pupil's own inhaler runs out, or is lost or forgotten. All inhalers must be labelled with the child's name by the parent/carer.
- School staff are not required to administer asthma medicines to pupils (except in an emergency), however many of the staff at this school are happy to do this. School staff who agree to administer medicines are insured by the local education authority when acting in agreement with this policy. All school staff will let pupils take their own medicines when they need to.

Record keeping

- At the beginning of each school year or when a child joins the school, parents/carers are asked if their child has any medical conditions including asthma on their enrolment form.

- All parents/carers of children with asthma are consequently sent an Asthma UK *School Asthma Card** to give to their child's doctor or asthma nurse to complete. Parents/carers are asked to return them to the school. From this information the school keeps its asthma register, which is available to all school staff.

School Asthma

*Cards** are then sent to parents/carers of children with asthma on an annual basis to update. Parents/carers are also asked to update or exchange the card for a new one if their child's medicines, or how much they take, changes during the year.

Exercise and activity – PE and games

- Taking part in sports, games and activities is an essential part of school life for all pupils. All teachers know which children in their class have asthma and all PE teachers at the school are aware of which pupils have asthma from the school's asthma register.

- Pupils with asthma are encouraged to participate fully in all PE lessons. PE teachers will remind pupils whose asthma is triggered by exercise to take their reliever inhaler before the lesson, and to thoroughly warm up and down before and after the lesson. It is agreed with PE staff that each pupil's inhaler will be labeled and kept in a box at the site of the lesson. If a pupil needs to use their inhaler during a lesson they will be encouraged to do so.
- Classroom teachers follow the same principles as described above for games and activities involving physical activity.

Out-of-hours sport

- There has been a large emphasis in recent years on increasing the number of children and young people involved in exercise and sport in and outside of school. The health benefits of exercise are well documented and this is also true for children and young people with asthma.

It is therefore important that the school involve pupils with asthma as much as possible in after school clubs.

- PE teachers, classroom teachers and out-ofhours school sport coaches are aware of the potential triggers for pupils with asthma when exercising, tips to minimise these triggers and what to do in the event of an asthma attack. All staff and sports coaches are provided with training from the school nurse, who has had asthma training.

School environment

- The school does all that it can to ensure the school environment is favourable to pupils with asthma. The school does not keep furry or feathery animals and has a

definitive no-smoking policy. As far as possible the school does not use chemicals in science and art lessons that are potential triggers for pupils with asthma. Pupils with asthma are encouraged to leave the room and go and sit in the school office if particular fumes trigger their asthma.

Making the school asthma-friendly

• The school ensures that all pupils understand asthma. Asthma can be included in the National Curriculum Key Stages 1 and 2 in science, design and technology, geography, history and PE .

When a pupil is falling behind in lessons

• If a pupil is missing a lot of time at school or is always tired because their asthma is disturbing their sleep at night, the class teacher will initially talk to the parents/carers to work out how to prevent their child from falling behind. If appropriate, the teacher will then talk to the school nurse and special education needs coordinator about the pupil's needs. • The school recognises that it is possible for pupils with asthma to have special education needs due to their asthma.

Asthma attacks

• All staff who come into contact with pupils with asthma know what to do in the event of an asthma attack.

Using a *School Asthma Card*

Below is a sample letter to send to parents for completion school asthma card.

Policy Agreed 22.10.14

Signed Chair ACC

To be reviewed Oct 15

Dear Parent/Carer

Re: The School Asthma Card

Thank you for informing us of your child's asthma on his/her registration form. As part of accepted good practice and with advice from the Department for Education & Skills, Asthma UK and the school's governing bodies, our school has recently established a new School Asthma Policy for use by all staff.

As part of this new policy, we are asking all parents and carers of children with asthma to help us by completing a school asthma card for their child/children. Please take this card to your child's doctor/asthma nurse to fill in and return it to the school by **(DATE)**.

The completed card will store helpful details about your child's current medicines, triggers, individual symptoms and emergency contact numbers. The card will help school staff to better understand your child's individual condition.

Please make sure the card is regularly checked and updated by your child's doctor or asthma nurse and the school is kept informed about changes to your child's medicines, including how much they take and when.

I look forward to receiving your child's completed school asthma card.
Thank you for your help.

Yours sincerely

Head teacher